

General Specifications:

Total Fixture Output: 9.2 klm

Light Engine Output: 31.5 klm

Efficacy: 16 Lumen/Watt

Lens Option: N/A

Zoomrange: 12-48°

CRI: 90+

CQS: 90+

TM-30 Rf: 90+

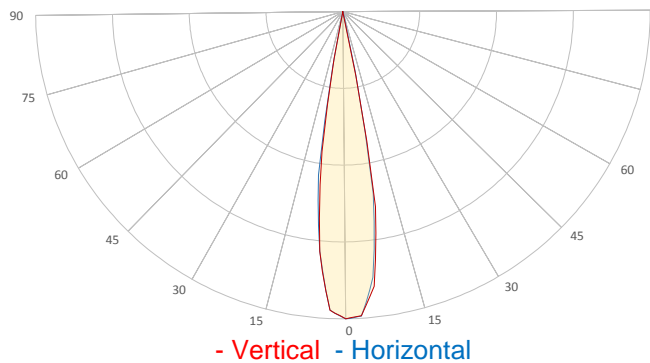
TM-30 Rg: 98+

TLCI: 90+

Color Temperature: 3000 K



Measurement



Catalog Number: 90234015

Measured Output: 9244 lm

Measured Peak: 121177 cd

Consumed Power: 582 W

Efficacy: 15.9 Lumen/Watt

Beam Angle (50%): 18.5°

Field Angle (10%): 22.9°

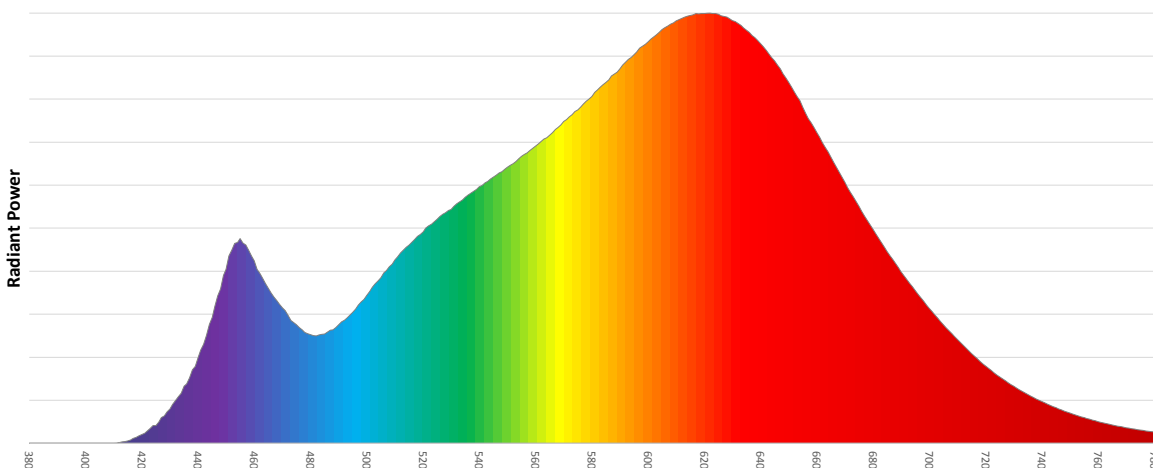
Cutoff Angle (3%): 23.7°

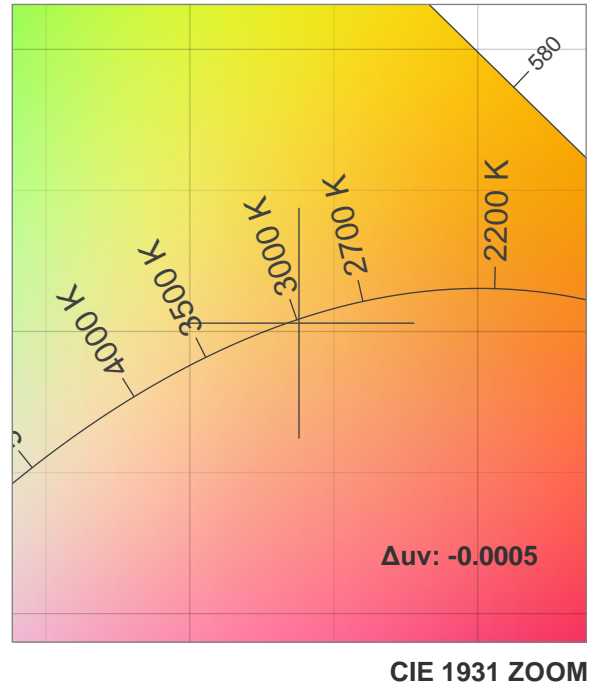
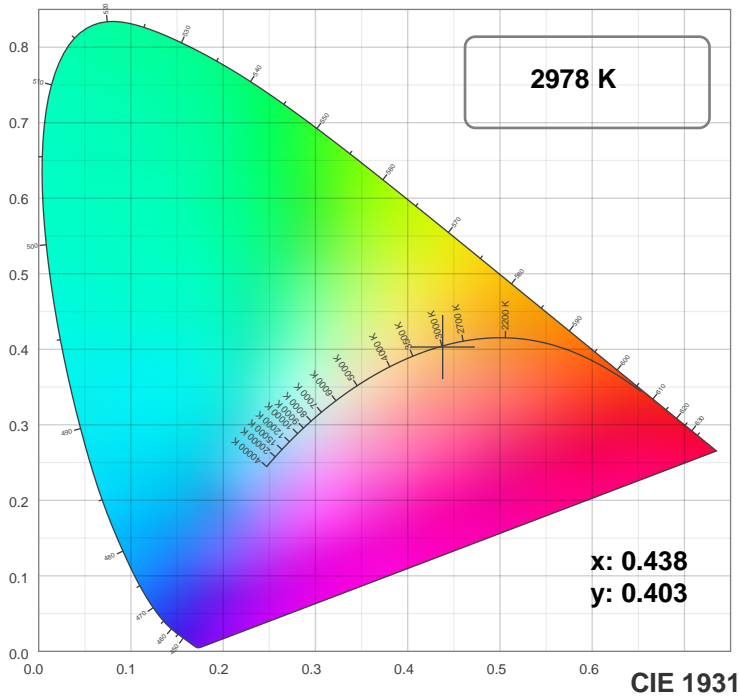
Measurement Condition:

Ambient Temperature: 25 +/- 5C

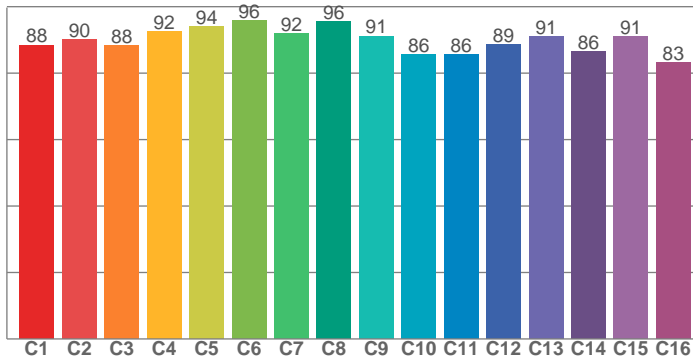
AC Supply: 230V/50Hz

Spectral distribution

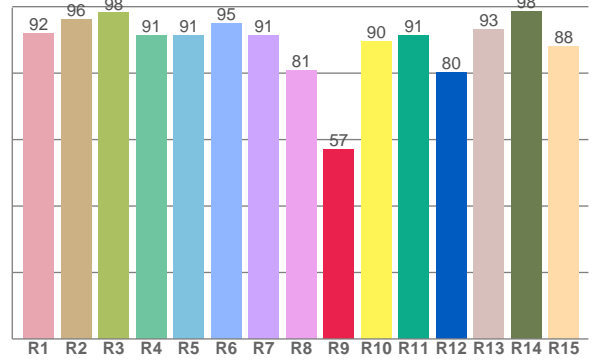




TM30: 89.8



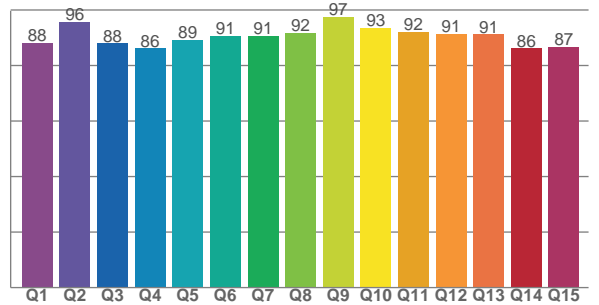
CRI: 92.0 (R1-R8)



Color Parameters

Color Temperature	Color Rendering Index	Red Component	Color Fidelity	Color Gamut
CCT	CRI	CRI R9	TM30 Rf	TM30 Rg
2978 K	92.0	56.9	89.8	98.3

CQS: 89.9



Television Lighting Consistency Index	Color Quality Scale	Color Coordinate CIE 1931	Color Coordinate CIE 1931	Color Coordinate CIE 1964	Color Coordinate CIE 1964	Color Diviation from Black Body
TLCI	CQS	x	y	u	v	Δuv
90+	89.9	0.438	0.403	0.252	0.347	-0.0005

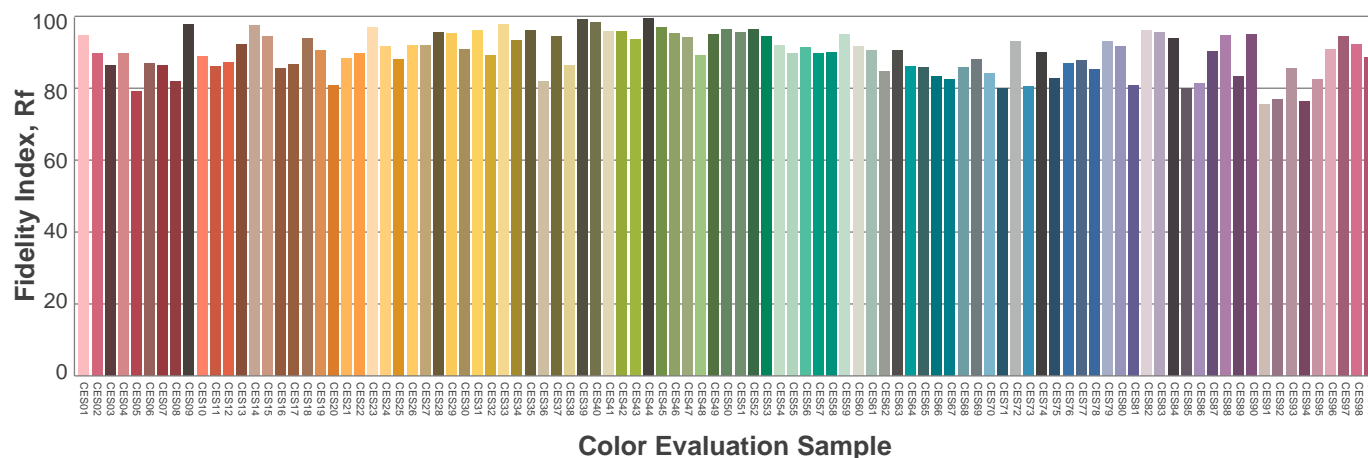
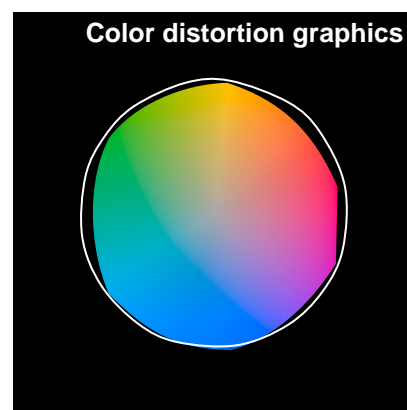
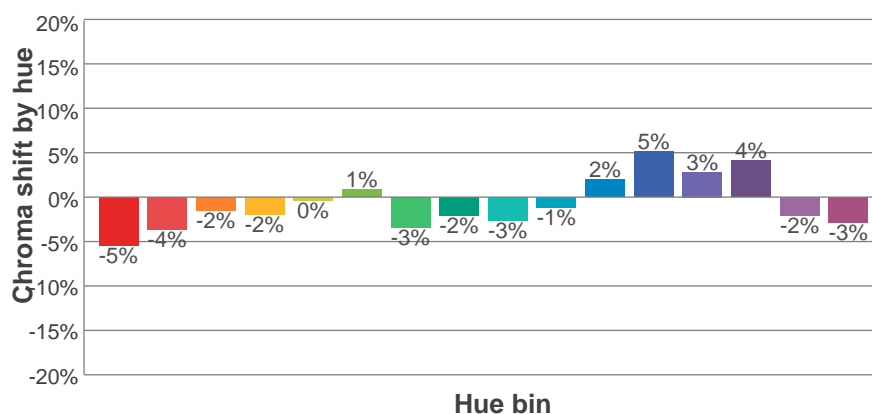
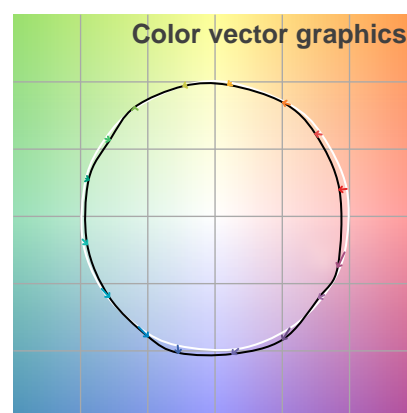
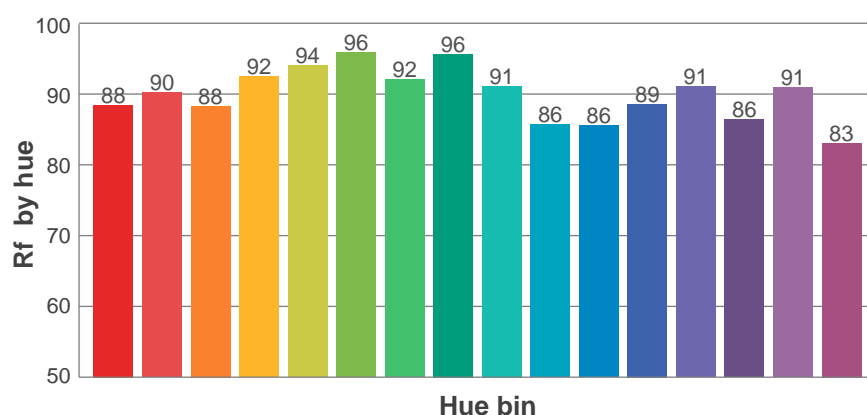
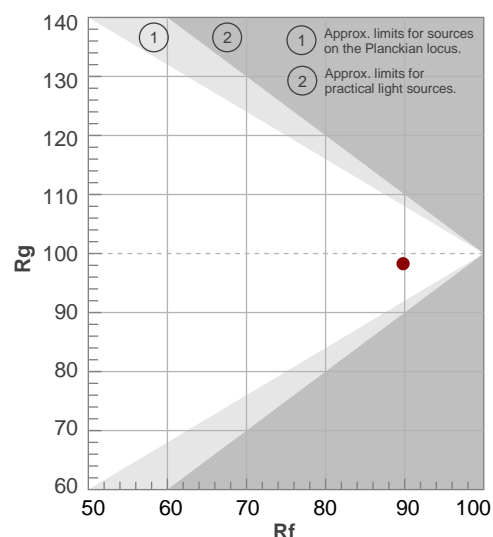
Rf 89.8

Fidelity index Rf

Rg 98.3

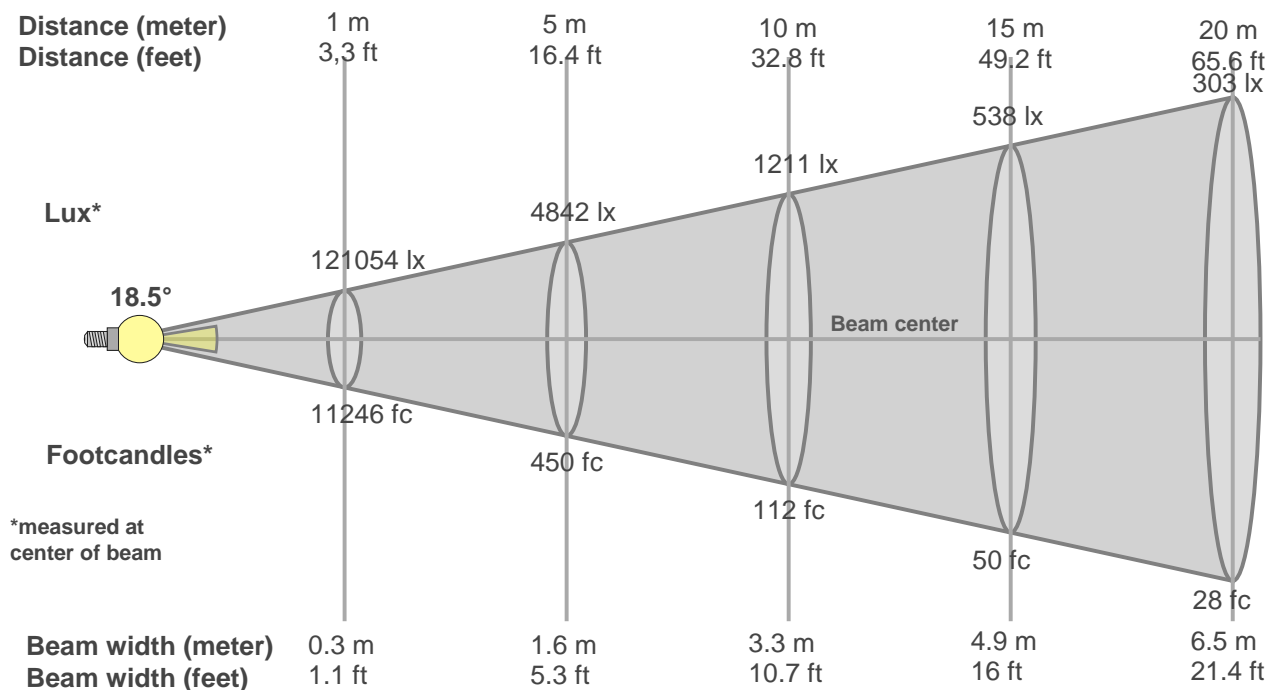
Gamut index Rg

Hue Bin	R _f	Graphic shifts (%)	
		Chroma	Hue
1	88	-5%	0%
2	90	-4%	3%
3	88	-2%	5%
4	92	-2%	2%
5	94	0%	2%
6	96	1%	0%
7	92	-3%	-1%
8	96	-2%	0%
9	91	-3%	4%
10	86	-1%	8%
11	86	2%	10%
12	89	5%	2%
13	91	3%	-5%
14	86	4%	-9%
15	91	-2%	-4%
16	83	-3%	-11%



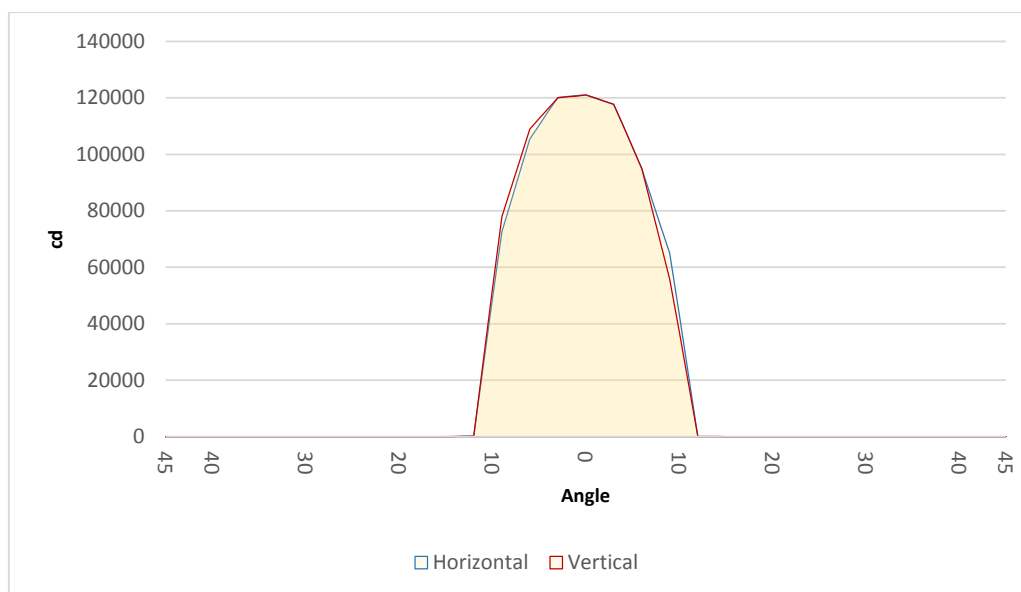
Beam Details

MAC Encore Performance WRM – Medium



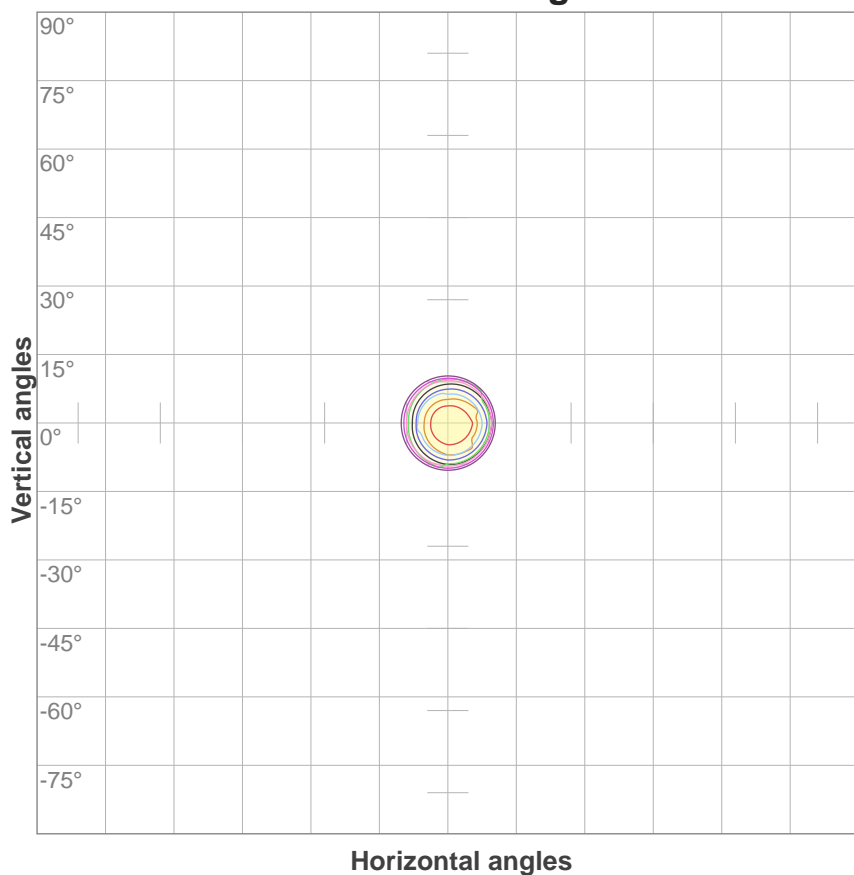
Beam illuminance from 1-20m

1m	2m	3m	4m	5m	6m	7m	8m	9m	10m	11m	12m	13m	14m	15m	16m	17m	18m	19m	20m
3.3ft	6.6ft	9.8ft	13.1ft	16.4ft	19.7ft	23ft	26.2ft	29.5ft	32.8ft	36.1ft	39.4ft	42.7ft	45.9ft	49.2ft	52.5ft	55.8ft	59.1ft	62.3ft	65.6ft
121054lx	30264lx	13450lx	7566lx	4842lx	3363lx	2470lx	1891lx	1494lx	1211lx	1000lx	841lx	716lx	618lx	538lx	473lx	419lx	374lx	335lx	303lx
11246.3fc	2811.6fc	1249.6fc	702.9fc	449.9fc	312.4fc	229.5fc	175.7fc	138.8fc	112.5fc	92.9fc	78.1fc	66.5fc	57.4fc	50fc	43.9fc	38.9fc	34.7fc	31.2fc	28.1fc



Beam angle 50%	Field angle 10%	Cutoff angle 3%
18.5°	22.9°	23.7°

ISO candela diagram



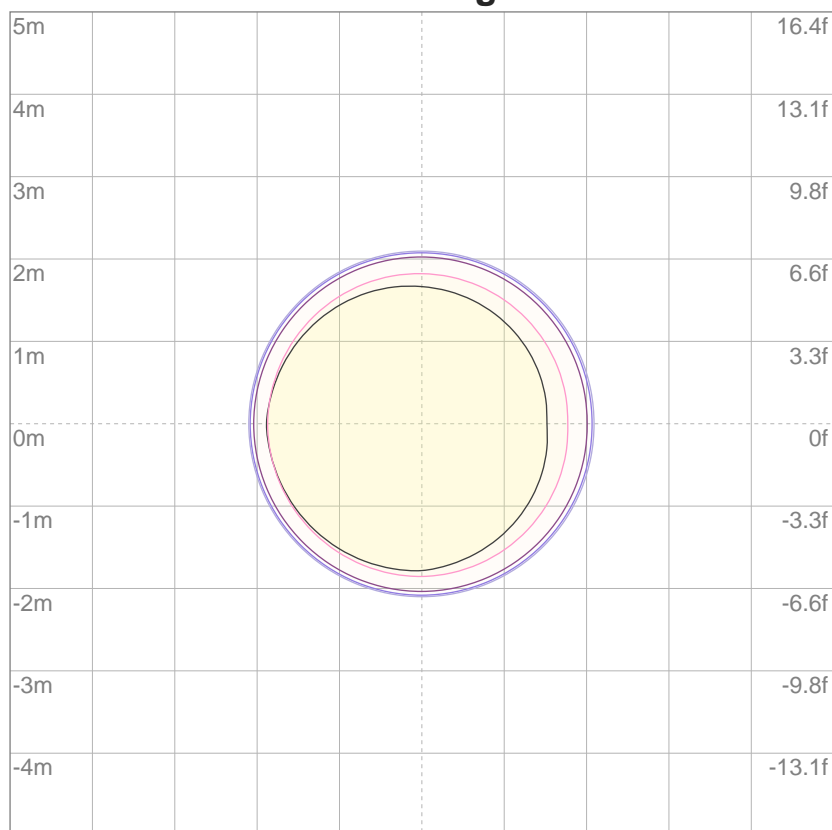
10%	12105 cd
20%	24211 cd
30%	36316 cd
40%	48422 cd
50%	60527 cd
60%	72633 cd
70%	84738 cd
80%	96844 cd
90%	108949 cd

Conditions:

Number of c-planes: 4

Candela at center: 121054 cd

ISO lux diagram



3%	36.3 lx
5%	60.5 lx
10%	121 lx
30%	363 lx
50%	605 lx

Conditions:

Number of c-planes: 4

Lux at center: 1211 lx

Lux distribution on a surface when lamp is mounted at 10 meters from the surface.

Throw Distance: 10 meters (33 feet)